



BALCONIES WITH VISION

sybkon: ingeniously modular



A new
perspective
on living

www.sybkon.at

WHY SYBKON IS DIFFERENT



The path from project start to completed renovation is often rockier than expected. Coordinating multiple trades frequently leads to delays and additional costs.

BUT THERE IS ANOTHER WAY:



SPEED SANITATION SYBKON

Satisfied customers even during construction thanks to minimal site disruption

Short installation times due to a high degree of prefabrication

Cost transparency throughout the entire project duration

ONE SYSTEM. MANY DESIGNS.

With sybkon, **INNOVAMETALL** expertly executes every balcony project, ensuring proven quality and meeting the highest fire safety requirements, all at an economical price.



BENEFITS:

- especially ideal for renovations
- numerous design possibilities
- sustainable and future-proof construction
- resource-efficient solution
- simple and practical implementation
- prefabricated balcony level
- installation in just a few steps
- effective fire protection
- sealing to the building using the sybkon wall profile
- barrier-free transition between balcony door and balcony level



UNIQUELY FAST INSTALLATION

Step 1:



We install profile supports and wall profiles on the facade. Meanwhile, we manufacture the balcony elements at our headquarters in Freistadt.

Step 2:



We deliver the finished sybkon balconies and attach them to the wall consoles. Short installation time & minimal site disruption!

CONSTRUCTION OF A SYBKON BALCONY



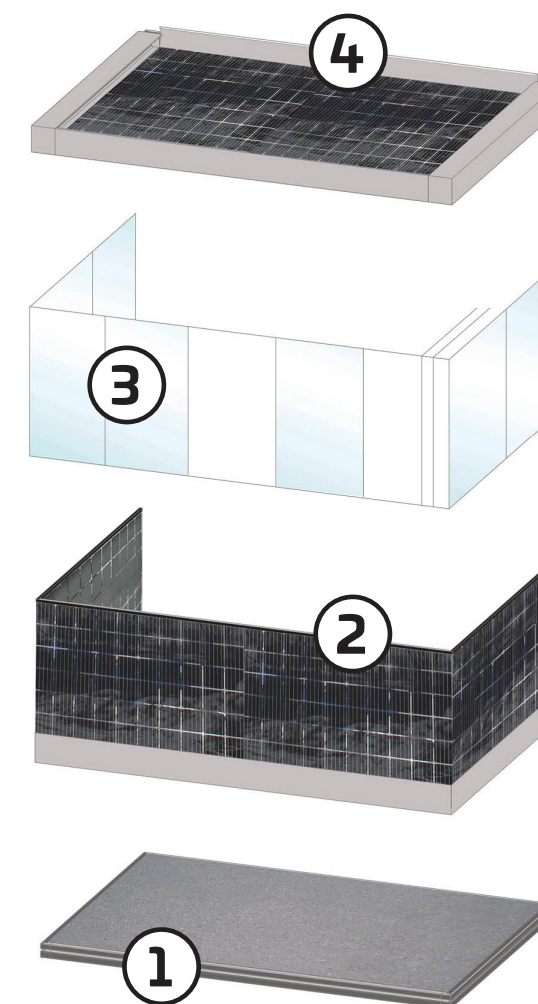
THE MODULAR BALCONY SYSTEM

The sybkon balcony level comes in four standard sizes:

3,5 x 1,8 m 4,2 x 1,8 m
3,5 x 2,1 m 4,2 x 2,1 m

Two basic types of load-bearing structure are available for selection:

Post or tension bar



1) Balcony level (usable area)

Thickness: 12 cm
Concrete, sandblasted

2) Railing

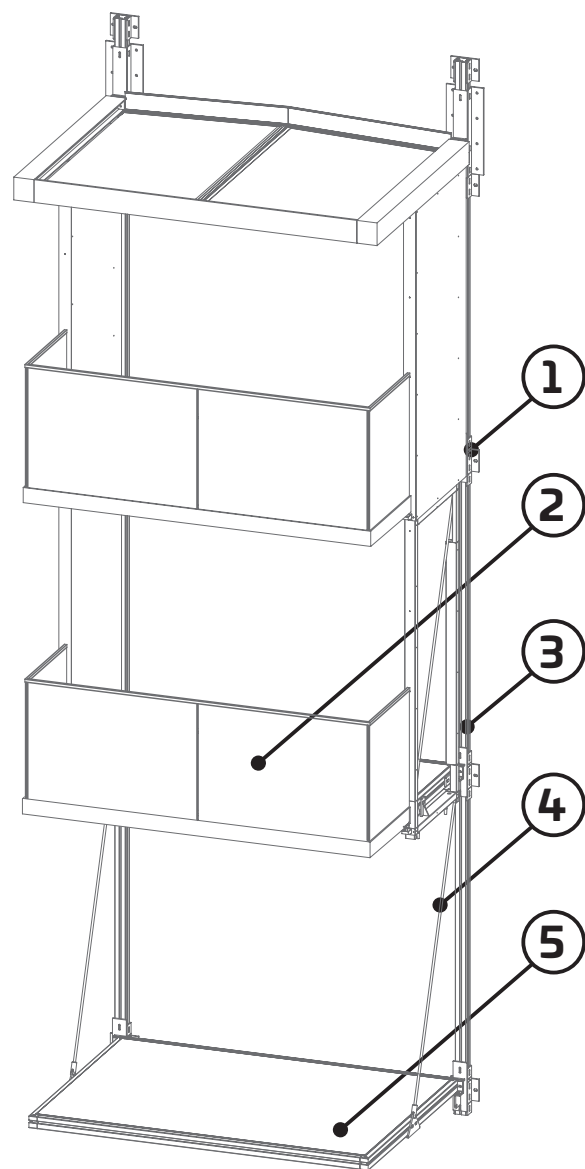
Photovoltaics
Glass
HPL
Perforated sheet metal
Expanded metal
Flat steel

3) Glazing

Frameless turn-slide
glazing by Lumon

4) Roofing

Photovoltaics
Glass
Sandwich panel
Wood/EPDM



1 Wall console
2 Railing
3 Profile support
4 Tension rod
5 Balcony level

TENSION BAR

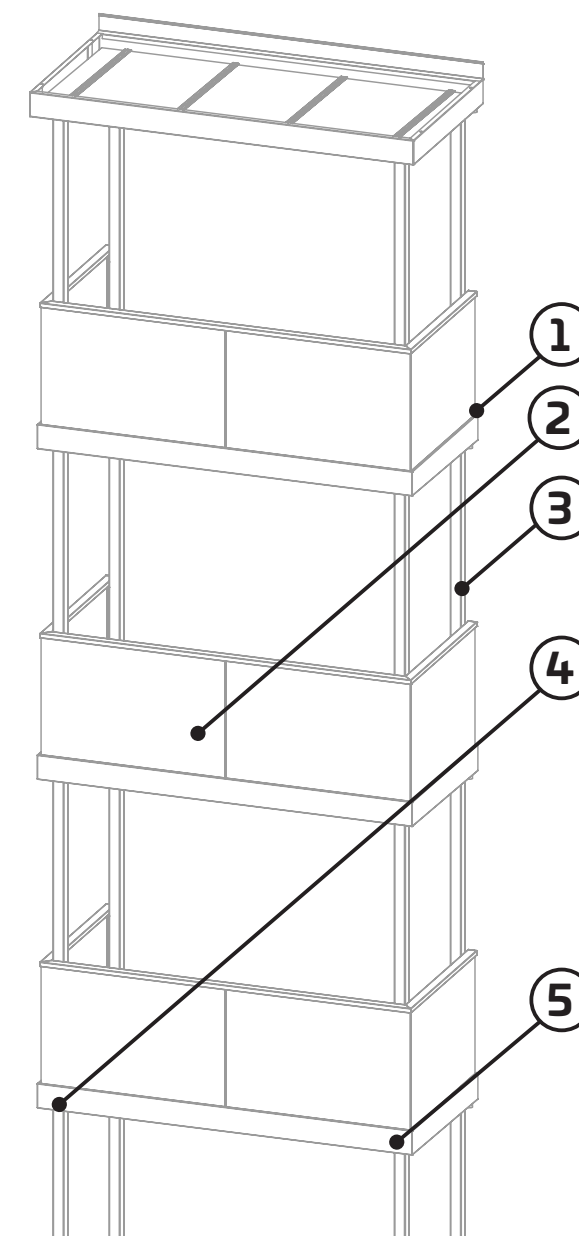
Load-bearing structure made of two profile supports. Attachment of the profile supports floor by floor to the building using wall consoles. Profile supports with screwed-on support consoles for securing the balcony levels. The balcony levels are suspended from the profile supports using tension bars.

- no foundation work required
- no need for pipe and conduit installation
- no specific floor height measurements required, ensuring uninterrupted construction process
- substructure installation possible immediately after scaffolding is in place
- no land reclamation activities required

POST

Load-bearing structure made of four profile supports. Attachment of the profile supports floor by floor to the building using wall consoles, as well as on point foundations constructed on-site according to our specifications. Profile supports with welded-on support consoles for securing the balcony levels.

- no additional load on existing building foundations
- no static requirements
- possible for nearly any building
- also suitable for buildings without renovation
- no preparatory work on the facade
- unlimited height
- roofs easily realizable even for attic apartments



1 Wall console
2 Railing
3 Profile support
4 Tension rod
5 Balcony level

SYBKON INGENIOUSLY MODULAR



REVOLUTIONARILY SLIM sybkon balcony level

The frame profile has a construction height of only 12 cm. Filled with high-quality, frost-resistant concrete, it forms a revolutionarily slim, highly reinforced prefabricated concrete balcony level that meets all fire protection requirements.

BENEFITS:

- super-slim 12 cm balcony level
- fire protection REI90
- thermal separation from the building
- barrier-free transition between balcony door and level
- option to integrate ceiling lighting
- customizable railings



BARRIER-FREE TRANSITION

syb
kon



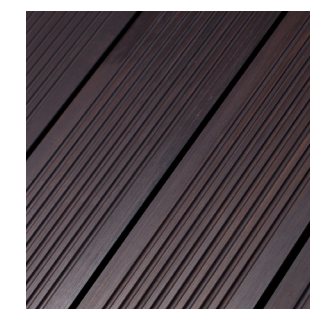
① Balcony level

Surface sandblasted. Underside raw concrete. A delicate extruded profile with an integrated EPDM insert as a connection seal to the wall, along with prefabricated, welded corner joints, ensures a clean, flexible wall connection. By embedding the checker plate into the balcony profile, a flush transition is created. This guarantees absolute barrier-free access between the apartment and the balcony.

Standard:
sandblasted



Custom solutions:
WPC or wooden flooring



RAILING OPTIONS



② Railing

For maximum safety combined with a wide range of design options, railing variants are available in six standard fills, all of which meet requirements for both aesthetics and ease of maintenance.

Custom versions upon request: decorative plaster, mesh, designer sheet metal, grating, wood, flamed wood

Photovoltaics



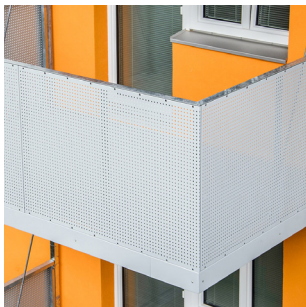
Glass



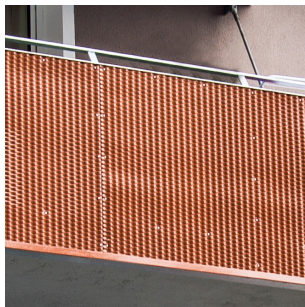
HPL



Perforated sheet metal



Expanded metal



Flat steel



TURN-SLIDE GLAZING

syb
kon



③ Frameless turn-slide glazing

With Lumon balcony glazing, residents enjoy even more quality of life. Whether closed, partially, or fully open, the balcony can be used year-round.

- Balconies stay clean - glazing protects against noise and exhaust gases
- With sun protection pleated blinds, temperatures remain comfortable even in the height of summer
- The turn-slide elements can be fully opened and are easy to clean on both sides



BALCONY ROOFING

syb
kon

④ Roofing

To ensure that the top balcony level can be used just like the others, a roofing is required.

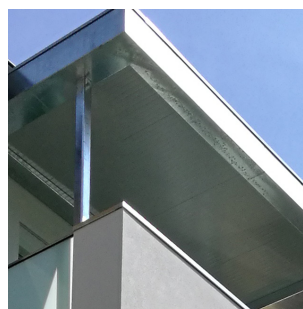
Photovoltaics



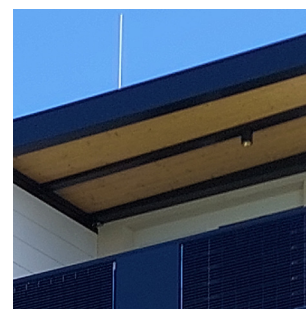
Glass



Sandwich panel



Wood/EPDM



CONFIGURATION

Required information

Please select

STANDARD SIZE	3,5 m x 1,8 m	
	3,5 m x 2,1 m	
	4,2 m x 1,8 m	
	4,2 m x 2,1 m	
TYPE	Post	
	Tension bar	
RAILING	Photovoltaics	
	Glass	
	HPL	
	Perforated sheet metal	
	Streckmetall	
	Flat steel	

Optional options

Select if necessary

ROOFING	Photovoltaics	
	Glass	
	Sandwich panel	
	Wood/EPDM	
TURN-SLIDE GLAZING	Lumon	

CERTIFICATIONS

Guidelines for sybkon

- Floor slab:
Concrete quality B3 corresponds to OiB Directive 2 - Point 3.1.5, herefore the fire-separating ceiling must be executed in EI90.
- Live load:
ÖNORM B 1991-1-1
- Vertical load::
Utilization category A (residential) 4 kN/m2
- Handrail load:
0,5 kN/m
- Wind load:
ÖNORM B 1991-1-4
- GLK III; h<35 m
- EN 1090
- Execution class EXC 2
- Steel grade:
ÖNORM B 1993-1-1
- S355JR

The logo for sybkon, featuring the word "syb" stacked above "kon" in a bold, sans-serif font. Below the text is a solid grey horizontal bar. The logo is centered within a dark grey square, which is positioned in front of a lighter yellow square.

syb
kon

sybkon is a brand of INNOVAMETALL